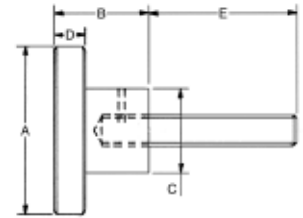


**Knurled Knobs**  
with studs

- ▶ Black oxide finish
- ▶ Stud is drilled and pinned in place
- ▶ Knurled head
- ▶ Machined from low carbon 12L14 steel

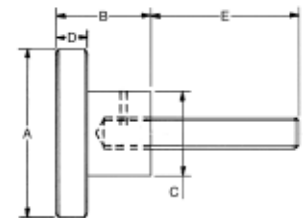


**INCH STUD**

PART #	Stud Thread	E	A	B	C	D
KKS-50	#10-24	1/2	3/4	5/8	1/2	1/4
KKS-51	#10-24	1	3/4	5/8	1/2	1/4
KKS-52	1/4-20	3/4	3/4	5/8	1/2	1/4
KKS-53	1/4-20	1-1/4	3/4	5/8	1/2	1/4
KKS-54	1/4-20	1-3/4	1	3/4	5/8	1/4
KKS-55	5/16-18	1-3/4	1	3/4	5/8	1/4
KKS-56	5/16-18	3	1	3/4	5/8	1/4
KKS-57	5/16-18	1-3/4	1-1/2	1	3/4	5/16
KKS-58	5/16-18	3	1-1/2	1	3/4	5/16
KKS-59	3/8-16	1-3/4	1-1/2	1	3/4	5/16
KKS-60	3/8-16	3	1-1/2	1	3/4	5/16
KKS-61	3/8-16	1-3/4	2	1-1/8	1	3/8
KKS-62	3/8-16	3	2	1-1/8	1	3/8
KKS-63	1/2-13	1-3/4	2	1-1/8	1	3/8
KKS-64	1/2-13	1-3/4	2-1/2	1-1/2	1-1/2	9/16
KKS-65	1/2-13	3	2-1/2	1-1/2	1-1/2	9/16
KKS-66	5/8-11	1-3/4	2-1/2	1-1/2	1-1/2	9/16

**Cast Iron Hand Knob Screws**

- ▶ Cast iron hand knob, zinc-plated finish
- ▶ Steel screw with black oxide finish
- ▶ Knurled hand knob



PART #	Stud Thread	E	A	B	C	D
SKS-2517	1/4-20	1-3/4	1-1/2	7/8	5/8	3/8
SKS-2530	1/4-20	3	1-1/2	7/8	5/8	3/8
SKS-3117	5/16-18	1-3/4	2	7/8	3/4	3/8
SKS-3130	5/16-18	3	2	7/8	3/4	3/8
SKS-3717	3/8-16	1-3/4	2	7/8	3/4	3/8
SKS-3730	3/8-16	3	2	7/8	3/4	3/8
SKS-5017	1/2-13	1-3/4	2-1/2	1-1/2	1-1/8	1/2
SKS-5030	1/2-13	3	2-1/2	1-1/2	1-1/8	1/2
SKS-6217	5/8-11	1-3/4	2-1/2	1-1/2	1-1/8	1/2
SKS-6230	5/8-11	3	2-1/2	1-1/2	1-1/8	1/2